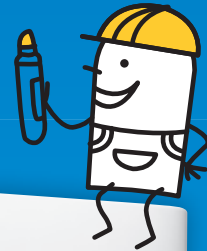
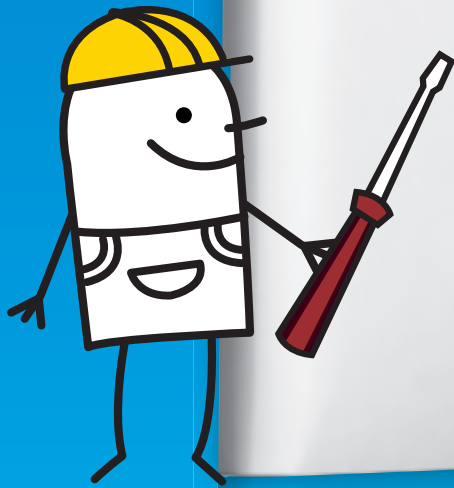


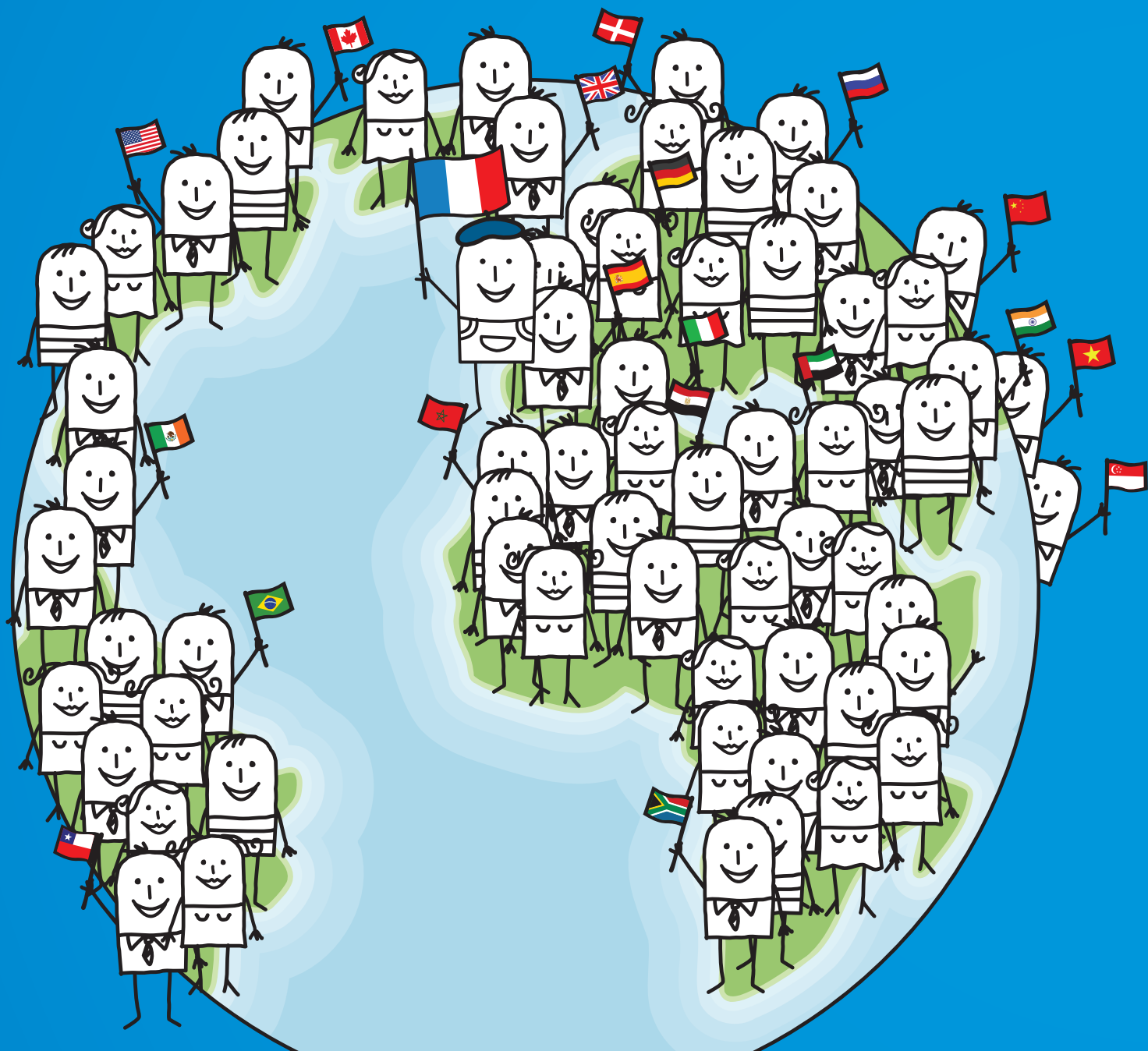
Rivia™

Your Everyday Choice!



 **legrand®**

Legrand, Everyo



An active international presence

Operating in a global market, Legrand has facilities in over 70 countries and sells products in close to 180 countries.



ne's choice!

A range for Vietnam – from the world No. 1 in wiring devices

Legrand, the global specialist in electrical and digital building infrastructures, is the world leader in wiring devices with offers for all major standards. Legrand's headquarters are based in France.

With more than 100 ranges of wiring devices spanning more than 200 functions Legrand provides solutions for any kind of market.

In touch and in tune with local conditions, today we have designed Rivia specially to suit the requirements of the Vietnamese market.

**Technical Expertise + Commitment to Quality =
Legrand, everyone's choice!**



Aesthetics is important



The slim profile complements the wall.
Result, seamless integration.



RiviaTM
Your Everyday Choice!

The Naturally Good-Looker

The product's clean and sleek design adds a touch of modernity to the range.

One unique design, Rivia fits and blends perfectly into any wall surface and any living environment.

**Visually appealing + Your Home =
Rivia™, your everyday choice!**



Thanks to specific plates, even safety breakers integrate perfectly into the installation.





1-way switch, 1 module



1-way switch, 1,5 module

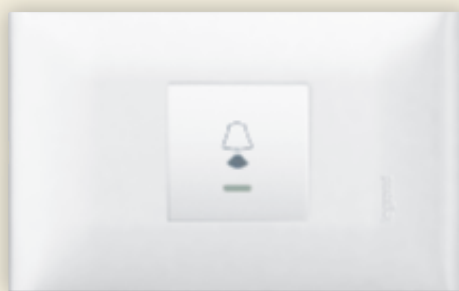


1-way switch with locator
and 1-way switch

Quality is



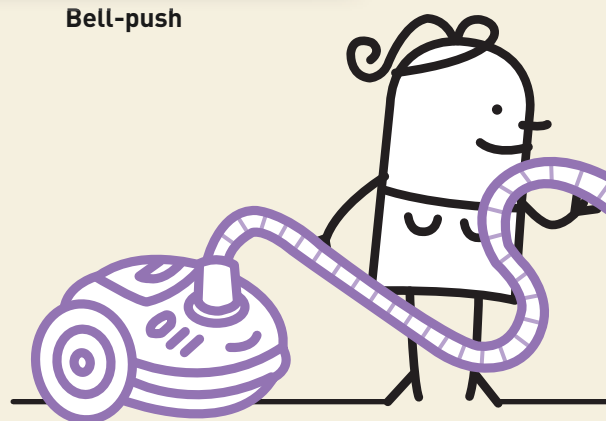
2 x 1-way switch



Bell-push



Multistandard socket and Euro-US
socket 2P+E with shutters





Euro-US sockets with
shutters, 16 A polarised



the basis



3 x RJ45 Data socket

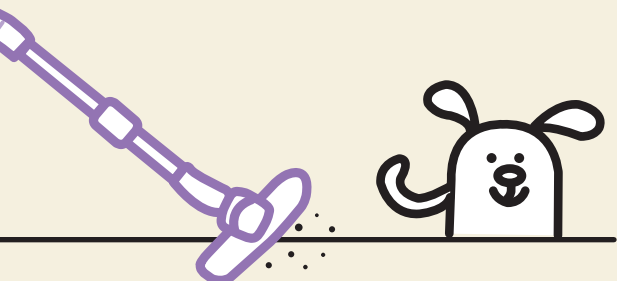


The Mark of Good Quality

Rivia represents Legrand's technical expertise and dedication to quality. The range is designed to conform to IEC standards:

- IEC 60669-1 for switches
- IEC 60884-1 for sockets
- IEC 11801 for RJ45 sockets

**Quality Consistency + Technical Expertise =
Rivia™, your everyday choice!**



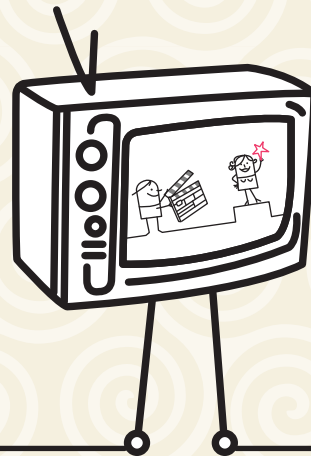
Be pampered by simple life luxuries.



**400W Rotary Dimmer
with 1-way switch**



Fan control



Functionality

Be connected to a world of possibilities.



**Telephone, data
and TV sockets**

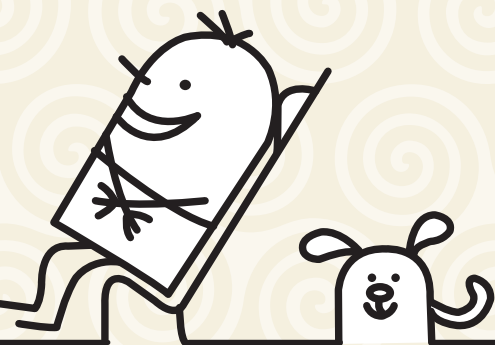


**2P+E Euro-US
sockets with shutters**

The Art of Complementary Partnership

Rivia offers all the essentials for modern living. More than basic switches and sockets, options such as dimmers or fan controllers for your comfort, safety breakers for your safety, as well as sockets for telephone, TV or data to keep you connected are available.

**Endless Options + Your Needs =
Rivia™, your everyday choice!**



is necessary

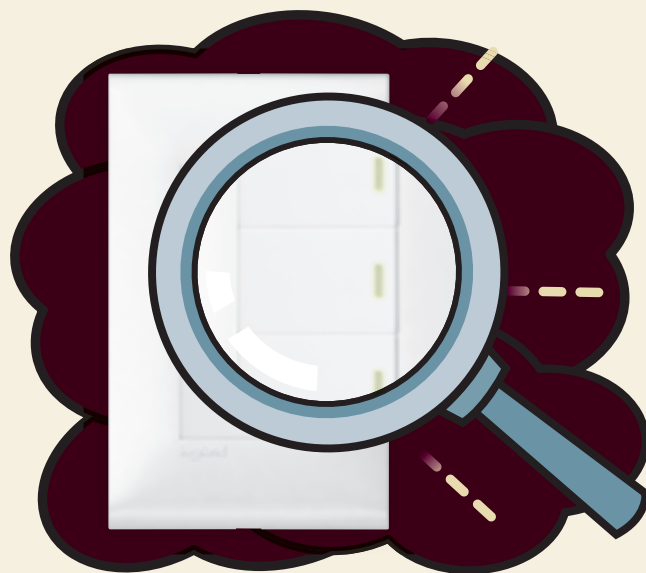
Safety meets aesthetics.



MCB with plate

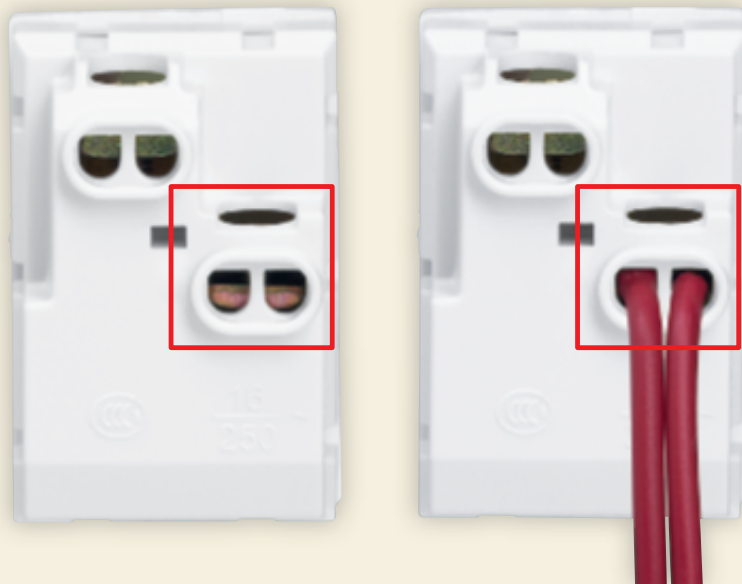
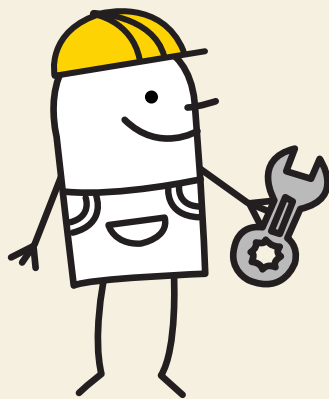


Safety breaker



The phosphorescent lenses glow in the dark.
Result, better orientation and enhanced safety.

Easy installation is required



**Switches and Duplex socket:
Double entry for safe and easy installation**

Wires are held in place with the clamping plate. This reduces the risk of damaging wires. The combination of double entry and clamping plate ensures long term reliability of the connection.

The Hallmark of a Complete Package

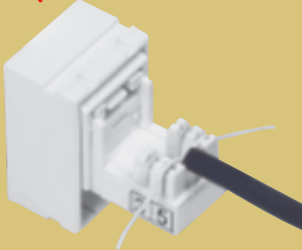
Rivia truly appreciates the importance of small details. That is why Rivia goes beyond looking good and working well. The range has also been designed for your ease of installation.

**Good Looks + Versatile Functions + Easy Installation =
Rivia™, your everyday choice!**

Easy wiring of telephone sockets:

- Clip-on tool provided with the mechanism
- No need to strip off the cables
- Dustproof cap provided with the mechanism

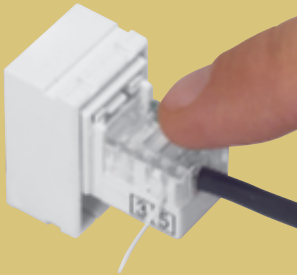
Step 1



Step 2



Step 3



Step 4

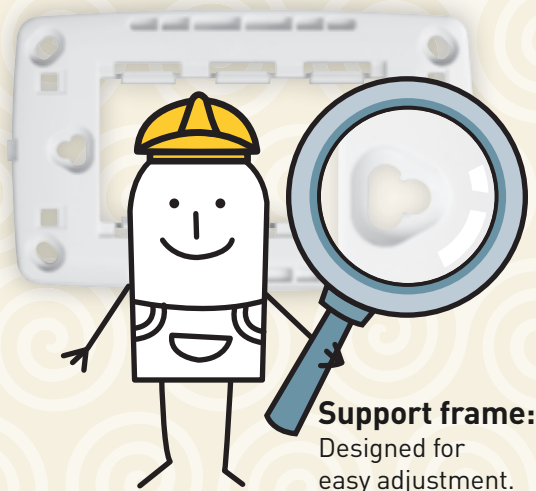


- Step 1: Insert the 2-core telephone cable into the 4 & 5 slot of the IDC terminal,
Step 2: Press the cable into the slot using the supplied tool,
Step 3: Assemble dustproof cap on the module,
Step 4: Cut the excess parts.

legrand®

Rivia™

Your Everyday Choice!



Support frame:
Designed for
easy adjustment.

Easy connection of TV sockets:

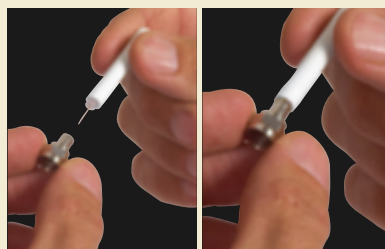
- No tool needed to connect the coaxial cable to the TV sockets

Step 1



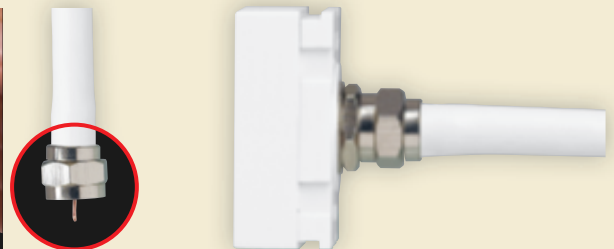
Strip off sheath of
coaxial cable

Step 2



Insert cable into F-hole, supplied with
the socket

Step 3



Connect the F-hole with cable to
the thread head of the TV socket
and screw tightly

Rivia™ mechanisms

switches, dimmer, bell push, fan control



6 543 00

6 543 35

6 543 15

6 543 36

Colour: White T084

Material: Polycarbonate

Pack	Cat.Nos	Switches 16 AX - 250 V~
10	6 543 00	Conform to IEC 60669-1 1 module (24 x 36 mm) 1-way switch
10	6 543 02	2-way switch
10	6 543 01	1-way locator switch
10	6 543 10	1.5 modules (36 x 36 mm) 1-way switch
10	6 543 12	2-way switch
10	6 543 11	1-way locator switch
5	6 543 13	Intermediate switch 10 AX 250 V~

Pack	Cat.Nos	Double pole switches 20 A - 250 V~
5	6 543 16	Conform to IEC 60669-1 1.5 modules (36 x 36 mm) 1-way switch with red neon indicator
5	6 543 17	1-way switch with red neon indicator and "Water-Heater" marking

Pack	Cat.Nos	Bell push 16 AX - 250 V~
5	6 543 15	Conform to IEC 60669-1 1.5 modules (36 x 36 mm)

Pack	Cat.Nos	Rotary dimmer 400 W - 250 V~ - 50 Hz
5	6 543 35	2 modules (36 x 48 mm)

Pack	Cat.Nos	Fan control - 220 V~
5	6 543 36	2 modules (36 x 48 mm)

Pack	Cat.Nos	Key card switch 250 V~
5	6 543 05	For energizing a circuit by inserting a key card (e.g. access card for a hotel room) Power requirement: 16 AX 220 V~ Time delay of approx 30 s after card removal Product supplied complete with support frame, plate and 2 screws M4

Rivia™ mechanisms

sockets, TV, telephone and data sockets



6 543 26

6 543 25

6 543 30

6 543 32

Colour: White T084

Material: Polycarbonate


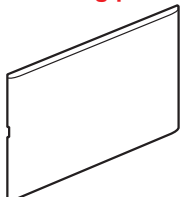
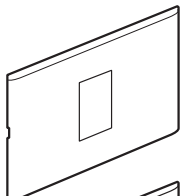
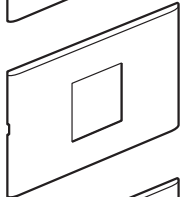
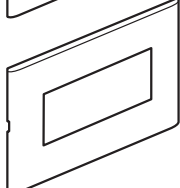
Pack	Cat.Nos	Euro-US socket outlets
10	6 543 20	Conform to IEC 60884-1 2P with shutters 16 A polarised 1 module (24 x 36 mm)
10	6 543 22	10 A non polarised 1.5 modules (36 x 36 mm)
10	6 543 24	2P+E with shutters 16 A 1.5 modules (36 x 36 mm)
10	6 543 26	2P+E Duplex with shutters 16 A 3 modules (36 x 72 mm)
10	6 543 25	Multistandard socket outlet 10 A with shutters 1.5 modules (36 x 36 mm)
1	6 170 68	Belanko shaver socket Conform to BS 61558 115/230 V - 20 VA - 50/60 Hz Surface or flush mounting, back box to be min. 47 mm deep - 2 gang Product supplied complete with support frame, plate and 2 screws M3.5 to fit BS boxes
10	6 543 30	TV socket Single TV socket, female 1 module (24 x 36 mm)
10	6 543 31	Telephone socket RJ 11 socket 1 module (24 x 36 mm)
10	6 543 32	Data socket Conform to IEC 11801 RJ 45 Cat.5e UTP 1 module (24 x 36 mm)
10	6 543 40	Locators Red neon locator, 1 module (24 x 36 mm)
10	6 543 41	Green neon locator, 1 module (24 x 36 mm)

Rivia™ plates

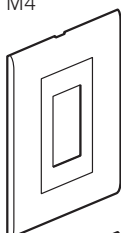
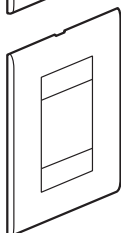
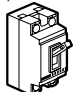
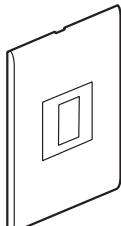
accessories and plates



Colour: White T084
Material: Polycarbonate

Pack	Cat.Nos	Accessory
50	6 543 42	 Strip 0.5 module (12 x 36 mm)
10	6 543 59	Blanking plate  Dimensions: 120 x 74 mm Equipped with support frame, supplied with 2 screws M4
		Plates Dimensions: 120 x 74 mm Equipped with support frame, supplied with 2 screws M4
10	6 543 50	 1 module
10	6 543 51	 1.5 modules
10	6 543 53	 3 modules

Rivia™ safety breakers

Pack	Cat.Nos	Flush plates for MCBs
		Dimensions: 74 x 120 mm Equipped with support frame, supplied with 2 screws M4
5	6 543 55	 For 1 pole MCB
5	6 543 56	 For 2 poles MCB
		Safety breakers 1.5 kA To be equipped with dedicated support frame and plate
1	BSB1/10	10 A, 2 P
1	BSB1/15	15 A, 2 P
1	BSB1/20	20 A, 2 P
1	BSB1/30	30 A, 2 P
		
5	6 543 57	Plate for safety breaker  Dimensions: 74 x 120 mm Equipped with support frame, supplied with 2 screws M4



► RX³ brochure

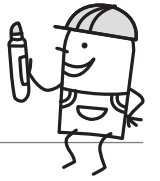
Rivia and the New RX³ Range

Q A PERFECT COMBINATION

The new RX³ range of MCBs and RCDs provides essential protection for residential or small business sites. Rivia plates for MCBs (Cat.Nos: 6 543 55 and 6 543 56) are perfectly suitable for this new range.

+ MORE INFORMATION

For further information — please contact your Legrand authorised distributor.



**HCMC:**

Legrand Vietnam Central Garden Tower 7th floor,
328 Vo Van Kiet Str.Co Giang Ward, Dist 1, HCM City

**Tel:** + 84 8 39 207 674**Fax:** + 84 8 39 207 675**www.legrand.com.vn****Hanoi:**

Legrand Vietnam
House Numb. 15.4, 15th floor
CT2-VIMECO Tower, E9,
Pham Hung Str., Cau Giay District